

RENAULT DUSTER



DRIVE THE CHANGE



THE STYLE OF A TRUE OFF-ROAD VEHICLE

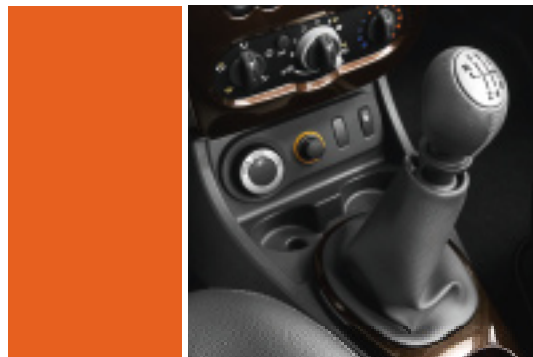
Wide wings and a tall stature reveal its personality: Duster is a true off-road vehicle! Its muscular design is that of a true adventurer, but it is also at ease in town, with its elegant style, chromed radiator grill and double-optic front lamps. Its sturdy and reassuring appearance are a reflection of its equipment: ABS, emergency brake assist, front driver and passenger airbags and head and thorax side airbags as standard (Ambiance version upwards), it benefits from renowned expertise in safety. Duster takes care of your wallet and the environment, it has moderate running costs due to an optimised maintenance programme, engines which are economical on fuel and environmentally-friendly and which have proved their reliability. Feel confident with Duster.



COPES WITH ALL TERRAINS



Duster fears no terrain. Provided with high ground clearance and large ramp breakover angles, it has true 4x4 capabilities. Its structure allows it to naturally cope with all road and track conditions. Duster is a light, compact vehicle for its size, which gives it great agility and contributes to its off-road performance. A performance in which the new manual 6-speed* gearbox also plays its part, the low 1st gear (5.79km/h at 1,000 rpm) allows for driving over rough ground, starting on a slope or under load, or holding the vehicle back when going downhill. With its intuitive 4x4* control, Duster adapts to all situations making driving easy. And in complete safety!



*Available on the 4x4 version.



2WD Mode:

- Operation: engine torque distributed to the front wheels.
- Conditions of use: road surfaces with good grip conditions and motorways.
- Advantage: optimised fuel consumption



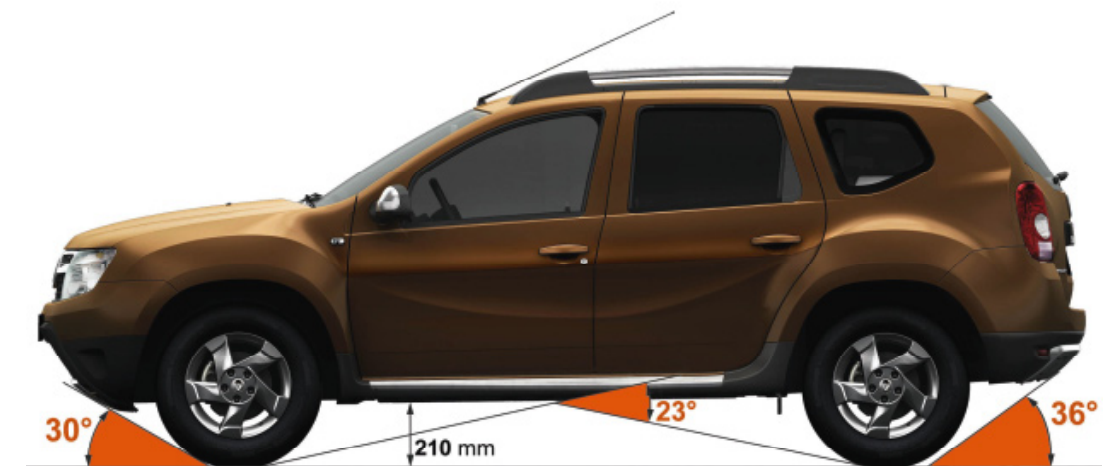
Automatic Mode:

- Operation: automatic distribution of engine torque over the four wheels depending on grip conditions.
- Conditions of use: all types of road in all grip conditions and on slippery road surfaces in particular (rain, snow, ice, etc.).
- Advantage: better compromise between roadholding and traction whatever the grip conditions so providing maximum safety.



Lock Mode:

- Operation: engine torque forced on all four wheels. Engine control and braking suited to 4x4 usage.
- Conditions of use: difficult stretches and off-road tracks (rough surfaces, mud, soil, sand) at low speed (< 80km/h).
- Advantage: maximises off-road capabilities.



COMFORT À LA CARTE



Duster has a large, comfortable interior. Practical and functional, its passenger compartment can hold 5 passengers and provides up to 475 litres of space in the boot (depending on version), easily providing enough space to carry all their luggage and leisure equipment. With the back seat folded down, the space available goes up to 1,636 litres. Folding the front passenger seat down enables objects as long as 2.65 meters to be carried in the passenger compartment. Because drivers and their families have different expectations, Duster offers equipment which concentrates on the essential without being superfluous. Leaving you free to customise your Duster! To meet all requirements, several packs and options are available: air conditioning*, radio-CD** and radio-CD MP3** systems, modularity pack comprising, in particular, a 1/3-2/3* split folding rear seat, electric rear windows***, leather pack**** (leather/teq upholstery, leather steering wheel and gear knob), etc. It's simple: Duster has a solution for all.

* On Ambiance. ** Ambiance upwards. *** On Laureate, leather covering present on the central part of the seat and backrest.



VERSIONS

DUSTER

Folding rear bench seat, front driver and passenger airbags, power steering, ABS and Emergency brake assist: simply essential.



LAUREATE

For a refined and functional interior environment, the Laureate version is adorned with Shiny Brown trim (central console, air vent surrounds and front door handles) and offers manual air conditioning, heated and electrically adjustable wing mirrors as standard as well as the modularity pack, ideal for all your leisure trips.

AMBIANCE

The Ambiance version offers star grey interior trim as standard (central console, air vent surrounds and front door handles), electric front windows and central door locking.





LEATHER* PACK

Leather upholstery, steering wheel and gear knob, exterior look pack: satin chrome door mirrors and roof rails, satin chrome appearance front/rear side skirts and skid plates, 4x15W CD radio with mp3 reader... Elegance and comfort in the finest details.

*Bovine source leather

ACCESSORIES



1. FRONT TUBE

This low, horizontal, 60mm diameter stainless steel tube accentuates the powerful and sleek character of your Renault Duster. It naturally complements the lateral bars.

1. LATERAL BARS

These lateral 60mm diameter stainless steel tubes protect and follow the line of the side skirts giving the imposing silhouette of the Renault Duster an undeniable elegance. They are compatible with the front flaps.

2. WING EXTENDERS, FRONT AND REAR FLAPS, SIDE PROTECTORS FOR WIDE DOORS

This combination protects the front and rear wheel arches against spatter and friction in particular, protects the bottoms of doors and side skirts, and limits sundry spatter. It also accentuates the vehicle's expression of sturdiness, security and multi-purposeness. It coordinates perfectly with the deliberate and expansive design of the Renault Duster's wings.

3. STANDARD COUPLING DEVICE

Designed for continuous use.

4. BOOT SILL

This both protects and elegantly adorns the rear of your Renault Duster whether in the town or in the country.

5. BLACK FRONT CENTRAL ARMREST

The front central armrest affords extra comfort to the driver during the trip and provides the occupants with an additional and discrete storage space. (also available in light grey).

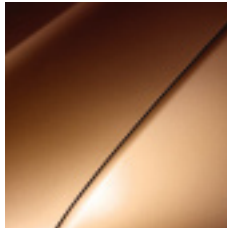
6. NOVESTRA RUBBER FLOOR MAT

Intended for use in severe conditions, the 4-piece rubber floor mat gives effective protection against snow and mud.

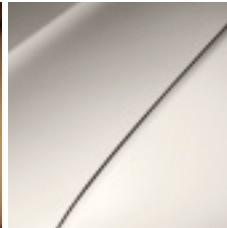
7. MADRIGAL TEXTILE FLOOR MAT

4-piece custom mat with rich velvet finish to protect the floor from wear and moisture in style. 100% compatible with the original dimensions. In black.

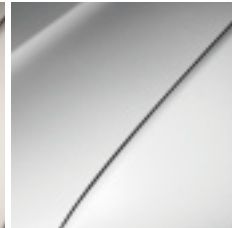
COLOURS



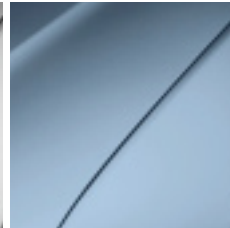
CASHW BROWN (SEC CNA)



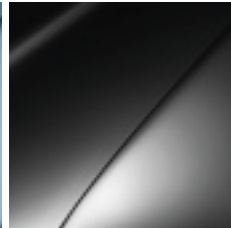
BASALT GREY (SEC KNM)



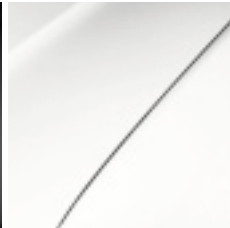
PLATINUM (SEC D69)



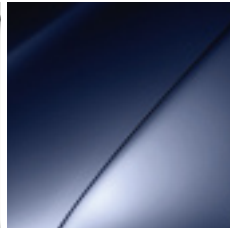
MINERAL BLUE (SEC RNF)



PEARL BLACK (PC 676)



GLACIER WHITE (CO 369)



NAVY BLUE (CO D42)

HUBCAPS AND RIMS



16" STEEL WHEEL RIMS



16" STYLED STEEL WHEEL RIMS



16" ALUMINIUM WHEEL RIMS

DIMENSIONAL DIAGRAMS



BOOT VOLUME (dm3 ISO 3832 standard)	4x2	4x4
Under luggage space with repair kit/spare wheel	475/475	443/408
Maxi fold-down rear seat with repair kit/spare wheel	1,636/1,636	1,604/1,570
DIMENSIONED DRAWING (mm)		
A Wheelbase		2,673
B Overall length		4,315
C Front overhang		822
D Rear overhang		820
E Front track		1,560
F Rear track		1,567
G Overall width without/with door mirrors		1,822/2,000
H Unladen height/with roof rails		1,625/1,695
K Ground clearance (unladen) 4x2/4x4		205/210
L Rear knee room		183
M Front elbow room		1,411
M1 Rear elbow room		1,438
N Front shoulder width		1,387
N1 Rear shoulder width		1,400
P1 Distance between hip joint and ceiling in front seats		907
P2 Distance between hip joint and ceiling in rear seats		895
Y2 Interior width between wheel arches		1,002
Z1 Loading length, rear seat in place		992
Z2 Loading length with rear seats folded		1,760
GROUND CLEARANCES		
1 Approach angle		30°
2 Ramp breakover angle		23°
3 Departure angle		36°

TECHNICAL FEATURES

	1.6 16V 105 hp	1.6 16V 105 hp	1.5 dCi 85	1.5 dCi 85	1.5 dCi 85
Engine code	4x2 A8	4x4 A8	4x2 MW	4x4 MV	4x4 A6
Gearbox type	5-speed manual	6-speed manual	5-speed manual	6-speed manual	6-speed manual
Emission control level	Euro 4	Euro 4	Euro 4	Euro 4	Euro 1
Number of seats			5		
Engine type	K4M	K4M	K9K HP	K9K HP	K9K HP
Engine air supply	Normally aspirated	Normally aspirated	Turbocharger	Turbocharger	Turbocharger
ENGINE					
Engine type	K4M 690	K4M 606	K9K 796	K9K 884	K9K 884
Capacity (cm3)	1,598	1,598	1,461	1,461	1,461
Bore x Stroke (mm)	79.5 x 80.5	79.5 x 80.5	76 x 80.5	76 x 80.5	76 x 80.5
Number of cylinders/valves	4 in line / 16	4 in line / 16	4 in line / 8	4 in line / 8	4 in line / 8
Compression ratio	9.8	9.8	17.6	15.7	15.7
Peak power kW CEE (hp DIN)	75 (102)	75 (102)	63 (85)	66 (90)	66 (90)
Peak power rating (rpm)	5,750	5,750	3,750	4,000	4,000
Peak torque Nm CEE (Nm):	145	145	200	200	200
Peak torque rating (rpm)	3,750	3,750	1,900	1,750	1,750
Type of injection	Sequential multipoint	Sequential multipoint	Direct common rail + multi-injection	Direct common rail + multi-injection	Direct common rail + multi-injection
Fuel	Petrol	Petrol	Diesel	Diesel	Diesel
Particulate filter	-	-	No	No	No
GEARBOX					
Gearbox type/index	JR5*187	TL8*002	JR5*189	TL8*000	TL8*000
Number of forward gears	5	6	5	6	6
Speeds at 1,000rpm: in 1st/2nd/3rd	6.82/12.42/19.25	5.79/9.97/14.82	7.98/14.53/22.51	5.79/9.97/15.80	5.79/9.97/15.80
Speeds at 1,000rpm: in 4th/5th/6th	26.18/30.99/-	20.00/25.14/31.83	30.62/39.34/-	23.16/31.83/41.82	23.16/31.83/41.82
STEERING					
Manual/power steering (type)			Power (Hydraulic)		
Turning circle between pavements/walls (m)			10.44/10.76		
Number of steering wheel turns			3.3		
AXLES					
Front axle type		McPherson type with rectangular lower arm and anti-roll bar			
Rear axle type		Flexible axle with programmed deflection and spiral springs	MacPherson multi-link suspension	Flexible axle with programmed deflection and spiral springs	MacPherson multi-link suspension
WHEELS AND TYRES					
Standard rims			6.5 J 16		
Standard tyres			215/65 R 16 M+S		
BRAKING					
Braking system type			X		
ABS Bosch 8.1			With or without linked to ABS		
EBA			linked to ABS		
Electronic brake force distribution			linked to ABS		
ESP			-		
Braking assistance: single (S), double (D) - Ø (")			S - 10"		
Front: ventilated discs (VD) dia. (mm)/thickness (mm)		VD 269/22.4	VD 269/22.4	VD 280/24 (ABS) VD 269/22.4 (without ABS)	VD 280/24 (ABS) VD 269/22.4 (without ABS)
Rear: Drum (D) / dia. (inches)				D - 9 inches	
PERFORMANCE					
Aerodynamic S (m2) / Cx			2.42/0.42		
Maximum speed (km/h)	163	158	155	158	158
0 - 100km/h (s)	11.7	13	13.9	14.9	14.9
400m stopping distance (s)	18.3	19.1	19	19.7	19.7
1,000m stopping distance (s)	34.1	34.8	35.9	36.5	36.5
CONSUMPTIONS AND EMISSIONS (IN L/100KM AND G/KM)					
CO2 (g/km)	177	186	135	140	140
Urban cycle (cold start - l/100km)	9.7	10.3	5.7	6.2	6.2
Extra-urban cycle (l/100km)	6.4	6.8	4.9	4.9	4.9
Full cycle (l/100km)	7.5	7.9	5.1	5.3	5.3
CAPACITY					
Fuel tank (litres)			50		
WEIGHT (KG)					
Kerb weight (kg)	1,160	1,250	1,180	1,288	1,288
Unladen weight on front axle (kg)	687	724	712	760	760
Unladen weight on rear axle (kg)	473	526	468	528	528
Total authorised laden weight (kg)	1,710	1,800	1,730	1,838	1,838
Gross train weight (GTW)	2,910	3,300	2,930	3,338	3,338
Max. payload (kg)			550		
Max braked trailer (within the GTW limit) (kg)	1,200	1,500	1,200	1,500	1,500
Max. unbraked trailer (kg)	615	660	625	680	680

FOR 111 YEARS, WE HAVE BEEN SHARING THE VISION THAT TO SUIT ITS ERA THE CAR MUST ALWAYS BE AN ADVANCE, A RESPONSIBLE COMMITMENT, A SOURCE OF ENTHUSIASM AND SUSTAINABLE MOBILITY FOR ALL.

Our relationship with drivers and their passengers is built around a simple idea: to be popular, a car must be practical, reliable and suited to everyone's lifestyle and expectations. This is why Renault offers **models that suit everybody, "cars for living", accessible to all.** From the first standardized models in France before the war to the imminent launch of the first range of electric vehicles, **it has always been our desire to democratize cars and mobility.**

Today, we are convinced that **another world is possible.** A world where the car will no longer be a threat to the environment and bring together **mobility, safety, and quality for all.**

We share this dream every day as we never forget that **passion for the car is,** and always will be, our greatest driving force. We want to give new meaning to the car, so that it can occupy a new place, more suitable to the challenges of society and always be an advance for man.

The Renault vehicles of today and tomorrow are the foundations of our ambition: **to make sustainable mobility accessible to all.**

RENAULT. DRIVE THE CHANGE.



WHO BETTER THAN RENAULT TO SERVICE YOUR RENAULT?

WARRANTIES

Starting from its delivery date, each Renault vehicle is covered by a two-year, unlimited mileage **Diamond Warranty**, including free repairs and assistance. Your vehicle has **extended warranties** against paint defects and corrosion of 3 and 12 years respectively*.

Renault also ensures that your usage and insurance costs are reduced with models that can be repaired at less cost and benefit from excellent protection against theft and break-ins (excellent "Danner" and "Thatcham" test results).

* Except the New Master range: 8-year anti-corrosion warranty.

FINANCING

Through its financing subsidiary **DIAC**, Renault offers a wide range of finance deals. **Renault New Deal** offers you the simplicity of an "all-inclusive" formula which includes finance, warranty, maintenance and trade-in at end of the contract.

SERVICE CONTRACTS

For even greater peace of mind, Renault offers to extend the original warranty and breakdown assistance services. The **Diamond Contract** extends the warranty to 5 years or 100,000 km and includes a parts and labour warranty, 24-hour 7-day breakdown cover and replacement vehicle in the event your vehicle cannot be driven.

The **Maintenance Contract** frees you for 4 years or up to 120,000 km of all maintenance and repair restrictions through additional services adapted to your profile, such as taking on the costs of maintenance and normal wear and tear.

The **Renault Confidence Pack** frees you of any worries for 3 years or 80,000 km. It combines a maintenance contract with a replacement vehicle in the event of breakdown or for servicing, the financing of your vehicle and its trade-in at the end of three years. A single monthly payment for a controlled budget and guaranteed mobility.

RENAULT ASSISTANCE

For breakdown repair on site or towing to the nearest workshop, the **Renault Assistance** network is available to you 24 hours a day, 7 days a week at the Azur number **08 10 05 15 15.**

RENAULT NETWORK SERVICES

No-one is better placed than Renault to maintain, equip and repair your Renault. The **Renault Minute** (maintenance without pre-booking) and Renault **Minute Bodywork** (work on paint, lights, windscreen, bodywork, etc.) services provide the best maintenance and repair quality with a 1 year warranty on repairs carried out and use of **Renault genuine spare parts.**

The latter, manufactured to the same quality as when the car was first manufactured, also enable you to preserve the original value of your Renault.

Renault Rent enables you to rent a personal or light commercial vehicle for a short time.

To customize your vehicle, choose from the wide range of durable, high-tech **Renault accessories.** And for financing you can control, the **"Payment Plan"** lets you pay in several instalments or monthly.

CUSTOMER RELATIONS DEPARTMENT

Renault has put in place various channels to listen to your comments and give you information:

• **Telephone: Renault 008 008** (008 008 736 2858)

Monday to Friday 8:00 to 19:00, Saturday 8:00 to 12:30, free call depending on your operator's conditions,

• Website: **www.renault.fr**,

• Post: **Renault, Customer Relations Department, 92109 Boulogne-Billancourt Cedex.**

How does the cruise control work?

A particular air-conditioning or navigation system?

The answers to all your questions about how a Renault vehicle works at the click of a mouse!

www.e-guide.renault.com

RENAULT DUSTER



(www.renault.com)

The utmost has been done to ensure that the content of this publication is accurate and up-to-date when going to press. This document has been created on the basis of pilot lots and prototypes. As part of its ongoing product improvement policy, Renault reserves the right to modify the specifications, vehicles and accessories described and shown at any time. Such modifications are communicated to Renault dealers as quickly as possible. Depending on the country of sale, certain versions may differ and certain equipment may be unavailable (as standard, optional or accessory). Please contact your nearest dealer for the latest information. For printing reasons, the colours that appear in this document may differ slightly from the actual paint and the upholstery colours. All rights reserved. It is forbidden to reproduce in any format and by any means all or part of this publication without prior written authorization from Renault.